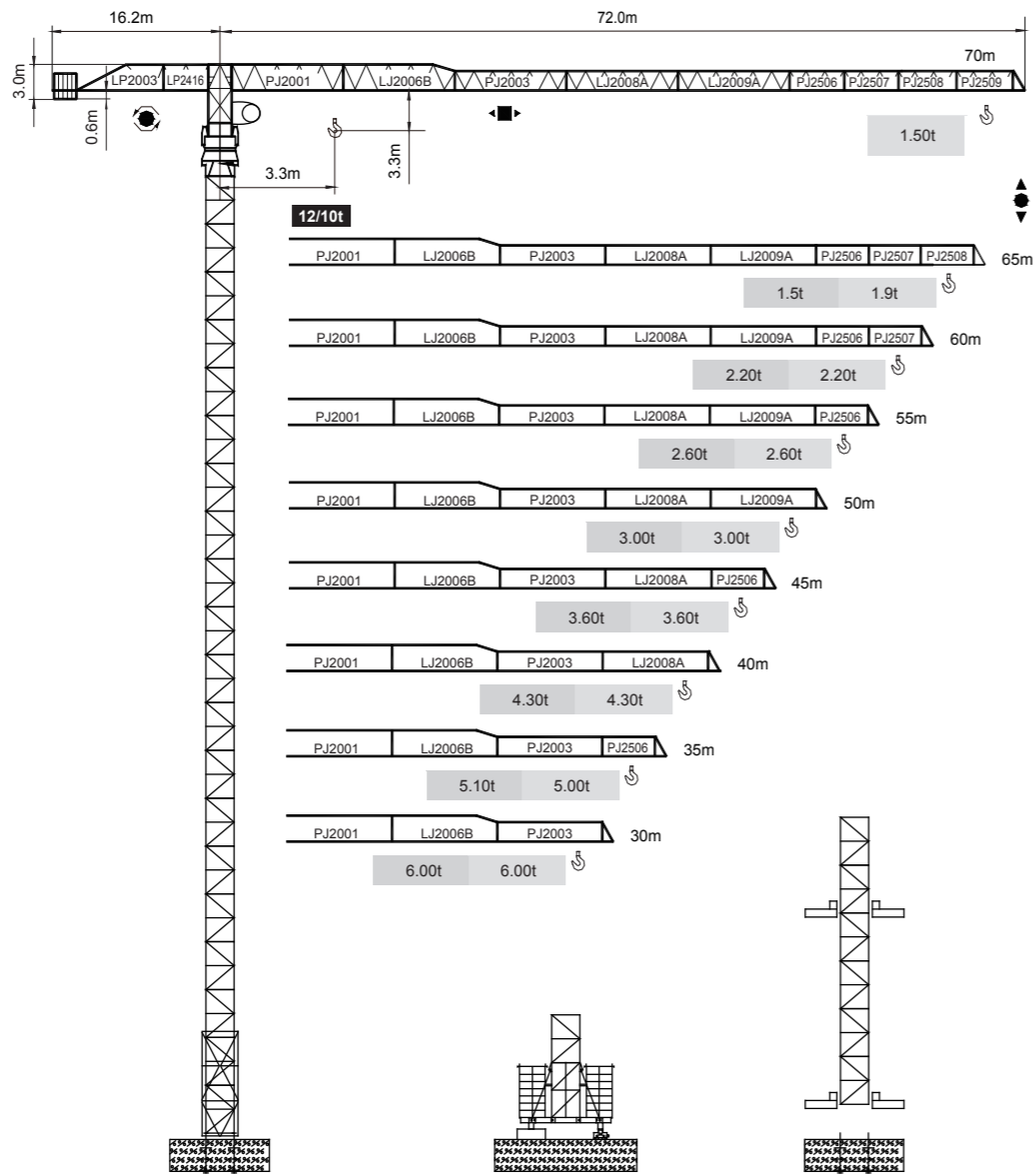


永茂建机
YONGMAO

STT200
12/10t



CE FEM

Topless

V 5.0-02282018

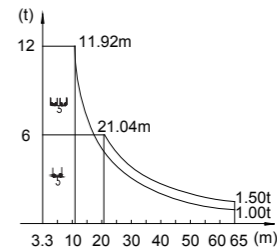
平頭系列

STT200
12/10t

載荷表 Load Chart

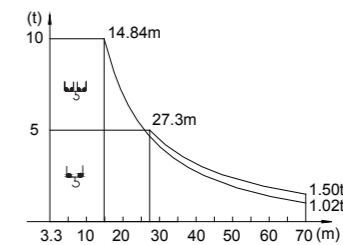
12t P-12-A(B)-1-V1.0

R (m)	倍率 Fall	R(C _{max}) (m)	C _{max} (t)	15	20	25	30	35	40	45	50	55	60	65
65	U	11.92	12.00	9.07	6.35	4.76	3.72	2.99	2.45	2.02	1.69	1.42	1.19	1.00
	U	21.04	6.00	6.00	6.00	4.92	3.97	3.31	2.81	2.43	2.13	1.88	1.67	1.50
60	U	14.18	12.00	11.22	7.93	6.01	4.76	3.87	3.22	2.71	2.30	1.97	1.70	
	U	25.78	6.00	6.00	6.00	6.00	5.05	4.22	3.61	3.14	2.76	2.45	2.20	
55	U	14.69	12.00	11.71	8.29	6.30	4.99	4.07	3.39	2.86	2.44	2.10	2.10	
	U	26.98	6.00	6.00	6.00	6.00	5.32	4.45	3.81	3.32	2.92	2.60		
50	U	14.90	12.00	11.91	8.43	6.41	5.09	4.16	3.46	2.93	2.50			
	U	27.57	6.00	6.00	6.00	6.00	5.45	4.57	3.91	3.40	3.00			
45	U	15.47	12.00	12.00	8.83	6.73	5.35	4.38	3.66	3.10				
	U	28.89	6.00	6.00	6.00	6.00	5.75	4.82	4.13	3.60				
40	U	15.89	12.00	12.00	9.13	6.96	5.54	4.54	3.80					
	U	29.88	6.00	6.00	6.00	6.00	5.97	5.01	4.30					
35	U	16.03	12.00	12.00	9.23	7.04	5.61	4.60						
	U	30.33	6.00	6.00	6.00	6.00	6.00	6.00	5.10					
30	U	16.88	12.00	12.00	9.82	7.51	6.00							
	U	30.00	6.00	6.00	6.00	6.00	6.00	6.00	6.00					



10t P-10-A(B)-1-V1.0

R (m)	倍率 Fall	R(C _{max}) (m)	C _{max} (t)	15	20	25	30	35	40	45	50	55	60	65	70
70	U	14.84	10.00	9.87	6.94	5.23	4.11	3.32	2.73	2.28	1.92	1.63	1.39	1.19	1.02
	U	27.30	5.00	5.00	5.00	5.00	4.47	3.72	3.16	2.72	2.38	2.10	1.87	1.67	1.50
65	U	16.12	10.00	10.00	7.69	5.83	4.60	3.74	3.10	2.61	2.21	1.89	1.62	1.40	
	U	29.26	5.00	5.00	5.00	5.00	4.86	4.06	3.47	3.01	2.65	2.35	2.11	1.90	
60	U	16.51	10.00	10.00	7.93	6.01	4.76	3.87	3.22	2.71	2.30	1.97	1.70		
	U	30.24	5.00	5.00	5.00	5.00	5.00	4.22	3.61	3.14	2.76	2.45	2.20		
55	U	17.45	10.00	10.00	8.49	6.45	5.12	4.18	3.49	2.95	2.52	2.17			
	U	31.66	5.00	5.00	5.00	5.00	5.00	4.45	3.81	3.32	2.92	2.60			
50	U	17.67	10.00	10.00	8.62	6.56	5.21	4.26	3.55	3.00	2.57				
	U	32.35	5.00	5.00	5.00	5.00	5.00	4.57	3.91	3.40	3.00				
45	U	18.32	10.00	10.00	9.00	6.86	5.46	4.47	3.74	3.17					
	U	33.91	5.00	5.00	5.00	5.00	5.00	4.82	4.13	3.60					
40	U	18.77	10.00	10.00	9.27	7.07	5.64	4.62	3.87						
	U	35.08	5.00	5.00	5.00	5.00	5.00	5.00	4.30						
35	U	18.91	10.00	10.00	9.35	7.14	5.69	4.67							
	U	35.00	5.00	5.00	5.00	5.00	5.00	5.00	5.00						
30	U	19.71	10.00	10.00	9.83	7.51	6.00								
	U	30.00	5.00	5.00	5.00	5.00	5.00	5.00	5.00						



0 0
3 3
3 4

Topless STT200

Topless STT200
Topless STT200



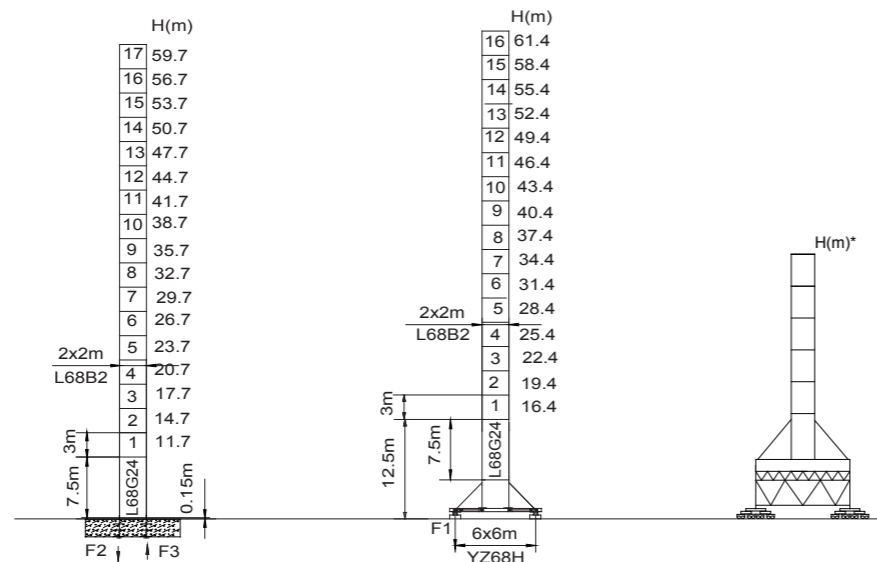
YONGMAO HOLDINGS LIMITED



YONGMAO HOLDINGS LIMITED

STT200

12/10t

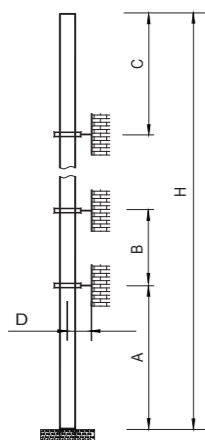


65m		●	■
F2	141t		255t
F3	97t		208t
		⊗	92t

70m		●	■
F2	132t		249t
F3	87t		208t
		⊗	78t

F1		●	■
	90.9t		128.9t
		⊗	105.7t

- 工作狀態支反力 In service reaction ■ 非工作狀態支反力 Out of service reaction
 ⊗ 整機自由高度重量 (不含平衡重及壓重重量) Total weight of free standing crane (excludes counter weight & ballast.)



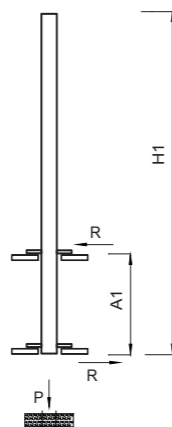
塔身節 Mast	A (m)	B (m)	C (m)	D (m)	H (m)
L68B2	45	36	44.7	>3.6	300 >300*

附著道數 Number of tie collars = (H-A-C)/B+1

超過100m高度，需降低載荷，請與公司聯繫。

Load should be reduced when the height exceeds 100m. Please contact Yongmao for details.

Topless STT200



塔身節 Mast	H1 (m)	A1 (m)	P (t)	R (t)	X (m)	Y (m)	L (m)	W (m)
L68B2	53.6	16	102.0	18	3.28	2.4	3.5	3.02
	50.6	12	100.4	23.2	3.28	2.4	3.5	3.02

內爬框外廓尺寸
Overall dimensions of the internal climbing frame

內爬開口尺寸
Dimensions of the internal climbing opening

平頭系列

0 0
3 3
5 6

Topless STT200
Topless STT200

STT200

12/10t

主要性能參數 Specifications

機構 Mechanism		●		●●		電纜 Cable	電動機 Motor kW
		m/min	t	m/min	t		
12t	55LFV30 ☆	0-44 0-53 0-88	6.0 4.0 1.7	0-22 0-27 0-44	12.0 8.0 3.5	630m	55
	75LFV30	0-60 0-80 0-120	6.0 3.0 1.5	0-30 0-40 0-60	12.0 6.0 3.0	1030m >1030m*	75
10t	37SWR25A ☆	0-40 0-80	5.0 2.5	0-20 0-40	10.0 5.0	500m	37
	45LFV25	0-40 0-48 0-80	5.0 4.0 1.5	0-20 0-24 0-40	10.0 8.0 3.0	500m	45
	55LFV25	0-45 0-54 0-90	5.0 4.0 1.5	0-22.5 0-27 0-45	10.0 8.0 3.0	1090m >1090m*	55
DTC	12t DTC120	0-57 m/min					120 N·m
	10t DTC95A	0-57 m/min					95 N·m
RTC	RTC240	0-0.7 rpm					2x120 N·m
RT	RT	12.5-25 m/min					4x2.6/5.2

電壓 Pressure	kVA	
380V (±10%) 50 Hz	37SRW25A : 65 55LFV25, 55LFV30 : 90	45LFV25 : 75 75LFV30 : 115

* 與製造商聯繫 Contact us, please.
 ☆ 标准配置 Standard configuration.

本技術參數不受法律約束，技術資訊請詳見相應說明書。
 These specifications and data are not legally binding. For any technical information, please refer to corresponding instructions.



YONGMAO HOLDINGS LIMITED



YONGMAO HOLDINGS LIMITED